



Instructions

JEEP JL 392 BATTERY/COMPRESSOR BRACKET

Thank you for supporting AAL! We greatly appreciate your trust in our company. We take your purchase and your commitment to us very seriously. If you have any questions along the way, please don't hesitate to give us a call at 385.202.4188.

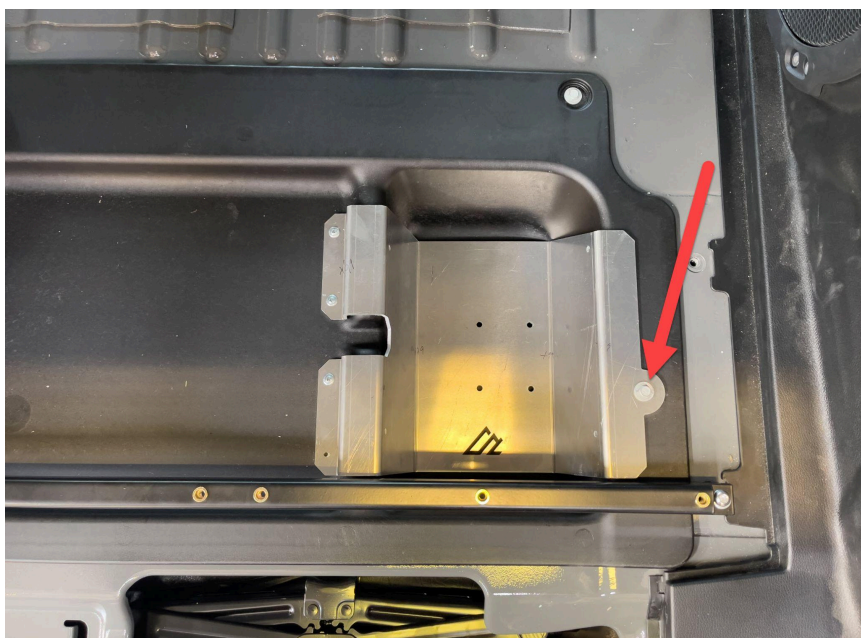
Please read the instructions thoroughly before starting this project.

Tools Required:

- Phillips Screwdriver
- 8mm Socket and Ratchet
- 3mm Allen Socket/Wrench
- 10mm Socket

There are multiple configuration options for this bracket. The options are listed below. The Battery Hold Down Bracket is an optional component and is purchased separately from the main bracket.

IMPORTANT - Remove the 10mm head OEM bolt shown below before placing the bracket into the cubby hole for any of the below configuration assembly processes. It is much easier to take it out now than after you get the compressor plumbed and wired or the BCDC wired in. Removing it now will also prevent the bracket from being grounded to the chassis, which will help prevent wiring "situations".

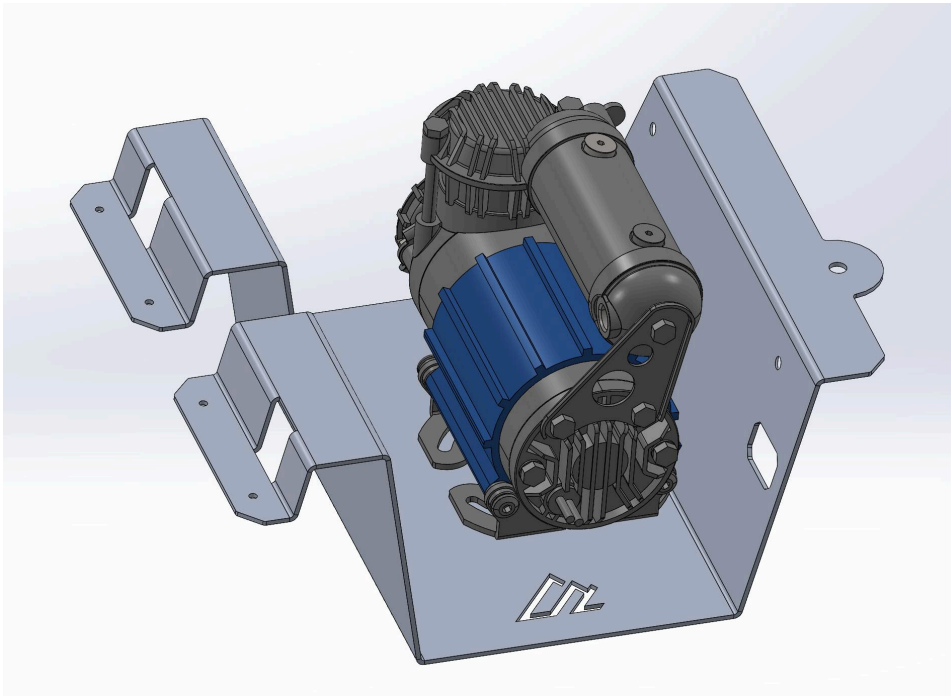


Compressor Only

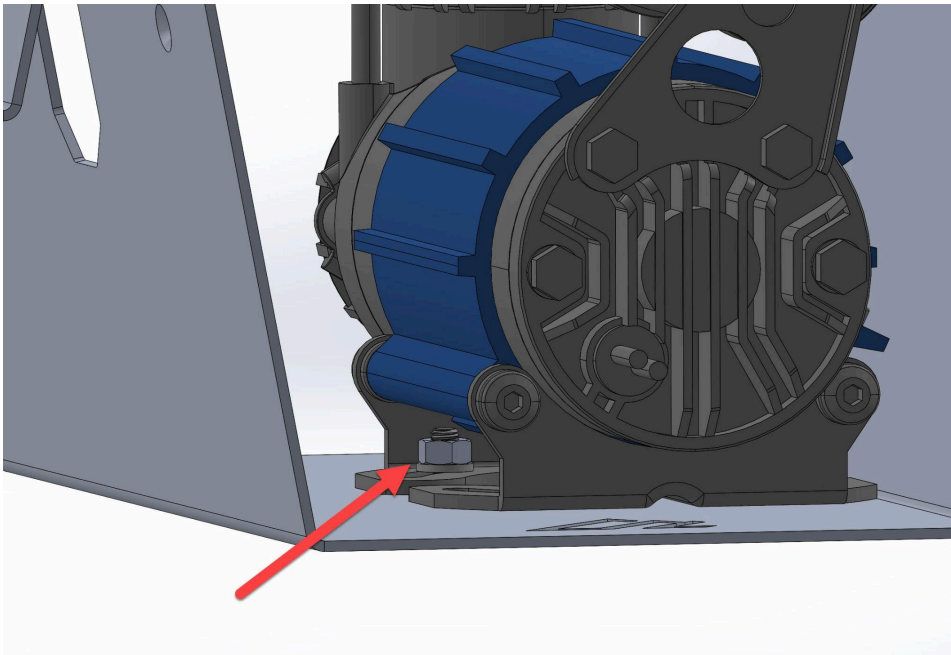
When using the bracket with the ARB Single Compressor, it is not possible to run the battery as well. There is not enough room in the space in the compartment.

Before installing the bracket into the Jeep, attach the compressor to the bracket in the orientation shown. It should be attached using the bolts supplied with the ARB compressor. The bolts should come up from the bottom with the nuts on the top side of the black bracket attached to the compressor, as shown below.

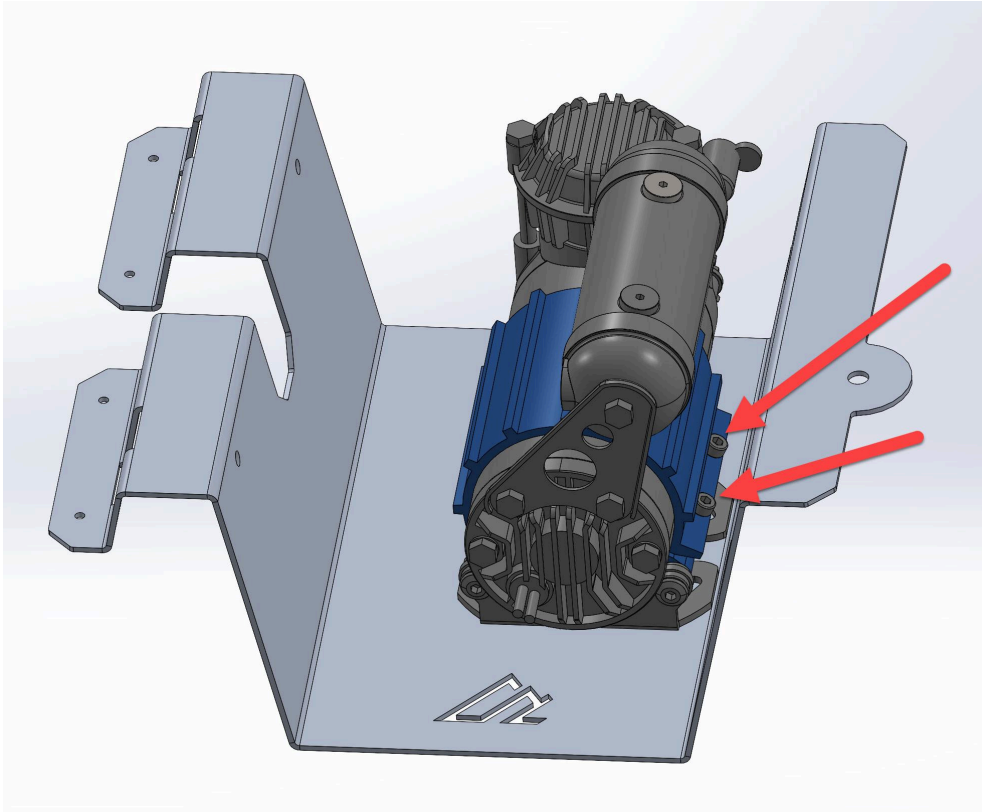
Orientation of Compressor



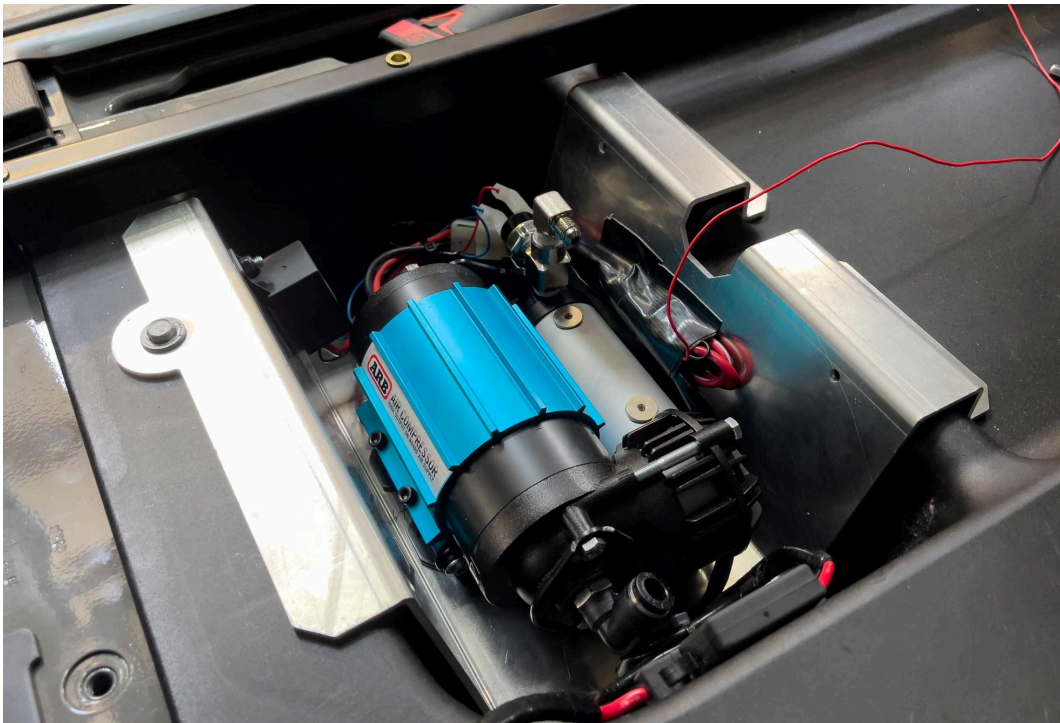
Orientation of Mounting Bolts



After the compressor has been attached to the bracket, you will need to loosen the bolts identified below and rotate the compressor assembly to move the manifold downward. This will provide clearance for the Jeep's cargo cover to be reinstalled.



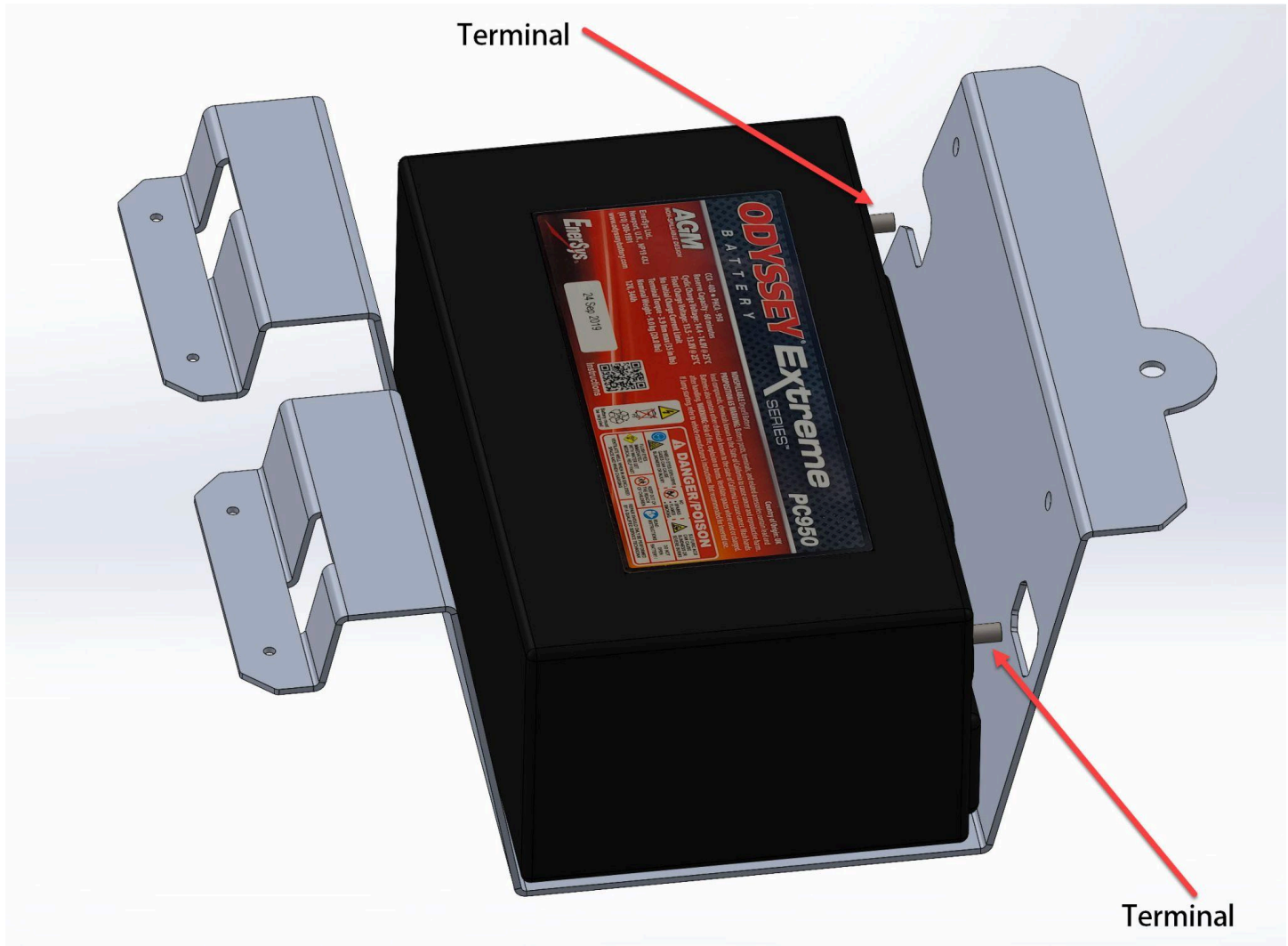
After rotating the compressor assembly, it will look like this. You can now tighten those allen bolts to resecure the compressor within its housing.



Next, move to the "Installing the Bracket" Procedure Below.

Battery (Including Optional BCDC)

The battery must be installed into the bracket prior to installing the bracket into the Jeep. Position the battery as shown, paying close attention to the battery terminal locations on the battery. The terminals should align with the cutouts in the bracket. This is to prevent the terminals from coming into contact with anything metal.



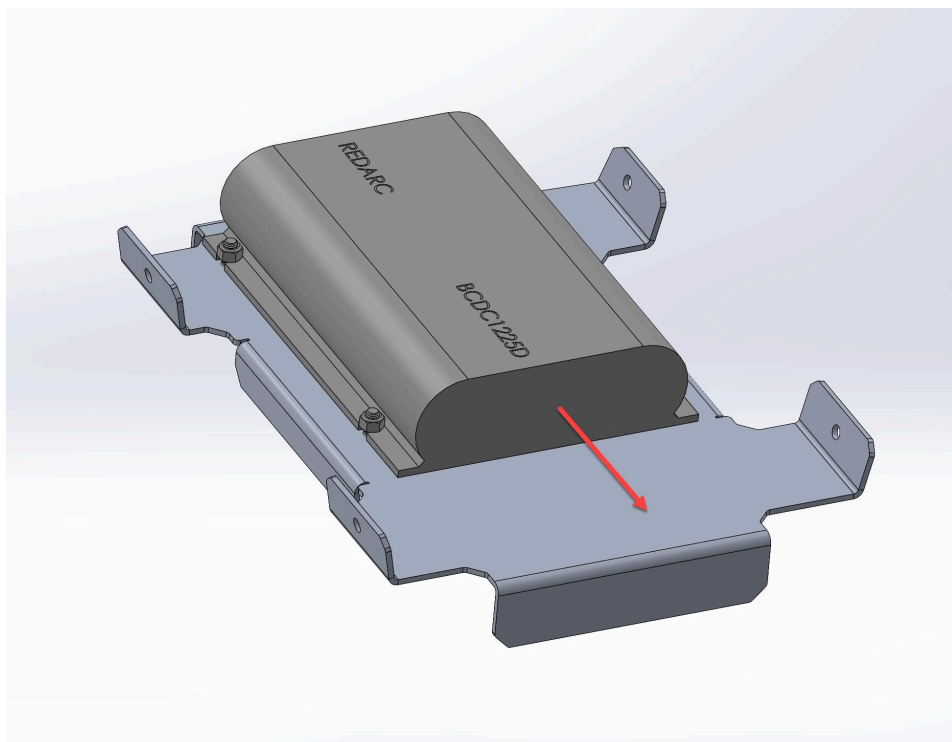
Depending on your wiring process, it may be easier to attach your battery cables before proceeding with the next step. It can get a little tight once the Battery Hold Down Bracket is attached.

NOTE: It is also very important to not install the OEM 10mm head bolt back into the Jeep prior to completing your wiring process. This bolt will effectively ground the bracket to the chassis, creating the potential for grounding the battery against the bracket or wiring. Hold off on installing this bolt until the very last step.

Attach the REDARC BCDC1225D (optional)

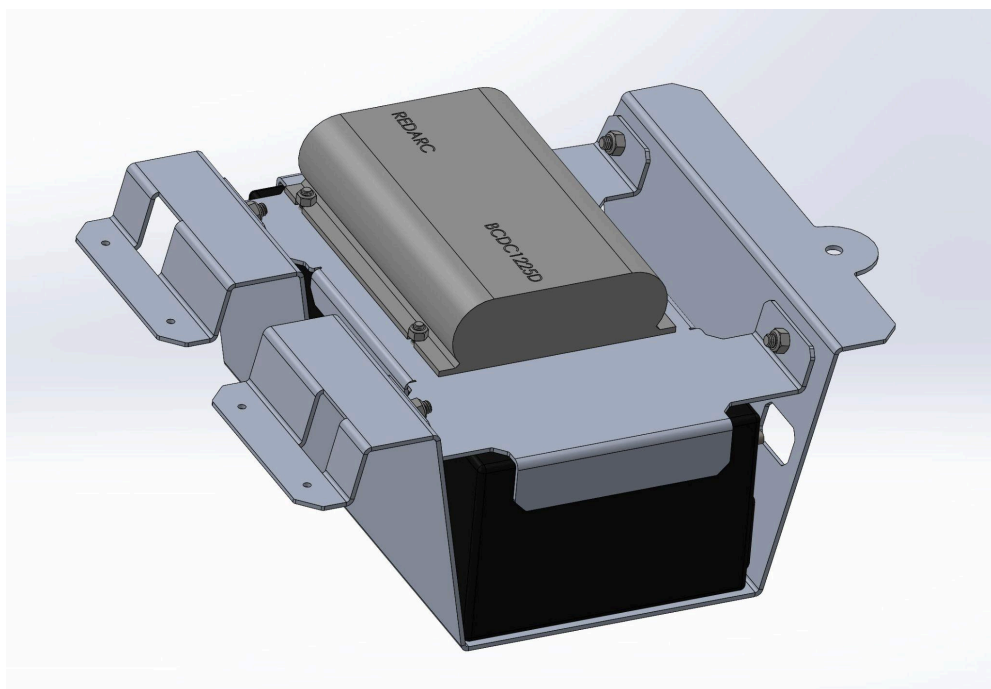
NOTE: The cover that hides the cubby area will not fit over the top of the BCDC. This setup is intended for use with our MASS Platform, as described on the product page.

If you are using the REDARC BCDC1225D, now is the time to attach it to the Battery Hold Down Bracket. It should be attached as shown below, with the nuts on the top side of the BCDC mounting flange. The wiring should be exiting the BCDC in the direction of the arrow.



Next, attach the Battery Hold Down Bracket (**after completing your wiring process**).

The battery hold down bracket should be oriented as shown below with the nuts facing inward. The bolts will be inserted from the outside inward. There isn't much room between the outside flanges of the bracket and the plastic walls of the cubby, so the nuts need to go to the inside.



Installing the Bracket

After your wiring is completed and your bracket is assembled, you can now install it into the Jeep.

1. Remove the 10mm head OEM bolt shown below on the right-hand side of the below illustration.
2. Then, install the four Philipps-head sheet metal screws (bottom arrow shows the hole in the bracket). It will take a little force to get them started into the plastic. (screw color may vary from the photo).
3. Lastly, reinstall the 10mm head bolt through the hole in the bracket and back into the threaded bung in the Jeep body.

You're done!

Share Your Photos

We take great pride in building our products and we hope that pride extends to you after installing them. If you are able to share your photos online (Facebook and Instagram), please tag **@AmericanAdventureLab** in the photos. We would love to see how it turned out and give you some reciprocal attention in return.

Thank you!

At American Adventure Lab, we strive to improve anywhere we can. If you experience any issues with this product or have any suggestions, please let us know.

If you have any questions or concerns, please don't hesitate to reach out to us at 385.202.4188 or via email at Sales@AmericanAdventureLab.com.

